



ANNUAL REPORT

2012

GOLF WESTERN AUSTRALIA (INC)

2012

CHAIRMAN

Max Hannah

BOARD OF DIRECTORS

Allan Bradshaw

Frank Bryant

Ian Crockett

Gemma Felton (replaced Grace Letizia)

Grace Letizia (resigned during the year)

Greg Norrish

Ken Richards

Dianne Tomlin

GOLF MANAGEMENT COMMITTEE

Graeme Parsons (Chair)

Alison Lang

Di Monk

Graeme Mustow

Harold Simmons

Russell Walker

CHIEF EXECUTIVE

Gary Thomas

AUDITOR

Harold G Shrigley & Associates

GOLF WESTERN AUSTRALIA (INC)

NOTICE OF MEETING

The 3rd Annual General Meeting of Golf Western Australia (Inc) will be held at Royal Perth Golf Club at 7.30 p.m. on Tuesday 5th March, 2013

AGENDA

1. Apologies
2. Previous Minutes
 - 2.1 Confirmation of the minutes of the Annual General Meeting held on March 6, 2012.
 - 2.2 Confirmation of the minutes of the Special General Meeting held on September 4, 2012
3. Business Arising
4. To receive and if thought fit, adopt the Annual Report and Statement of Accounts for the year ended 31st December 2012.
5. Notice of Motion

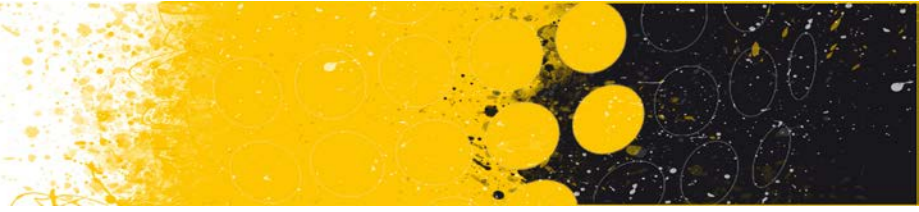
Change to the Constitution

5.1 Special Resolution 1

That the Delegates consider, and if thought fit, pass the following Resolution for changes to the Constitution of Golf Western Australia as a Special Resolution

“That Clause 4 be inserted to the end of Clause 2 so it forms part of the Objects clause and that all subsequent clauses after Clause 3 in the Constitution be renumbered accordingly”.

Explanatory note: GolfWA has been advised by the WA Department of Commerce that Schedule 1(2) of the Incorporations Act requires the provision for the non-profit statement to appear within the objects or purposes clause of the association’s rules.



Life Membership

5.2 Special Resolution 2

That the Delegates consider, and if thought fit, pass the following Resolution as a Special Resolution:

“The Board of Directors recommends that John D Hopkins be appointed as a Life Member of Golf Western Australia (Inc)”

Explanatory Note: As per Clause 9 of the Constitution, the Board of GolfWA may recommend to the AGM that any person, who has rendered distinguished service to golf, where such service is deemed to have assisted the advancement of golf in Western Australia, be appointed a Life Member. Such Resolution must be a Special Resolution (Clause 9b).

Attached is a profile highlighting the service to golf by John Hopkins and it is the unanimous view of the Board that John Hopkins be appointed as a Life Member due to his level of service.

6. Election of Chairman and three Directors to the Board of Golf Western Australia

7. General Business

A handwritten signature in black ink, appearing to read "Gary Thomas".

Gary Thomas
Chief Executive

February 6, 2013

Chairman's Report

I am pleased to report that 2012 has been another highly successful year for Golf Western Australia. Almost all the Board's strategic objectives were achieved and many surpassed. Any lingering doubts that amalgamation of men's and women's golf would be a boost for the game in Western Australia have now been well and truly dispelled.

Board of Management

Elections at the Annual General Meeting in March resulted in the re-election of Frank Bryant, Grace Letizia and Ken Richards for two year terms. It was unfortunate that during the year Grace Letizia had to resign for personal and family reasons. Her contribution to the Interim Board during 2010 and the elected Boards during 2011 and 2012 was outstanding, always willing to put forward fresh ideas and make strong contributions generally and to specific tasks that were assigned. Thank you Grace for a job very well done.

We are fortunate that Gemma Felton was available to take up the casual vacancy on the Board for the remainder of Grace's two year term. Among Gemma's skills and qualifications for this role, she brings to the Board a strong background in marketing and management which will provide great assistance to Ian Crockett and the Marketing Committee.

The Board met on eleven occasions during the year to deal with the usual range of strategic and operational matters, the more important of which are discussed in more detail during this report. In a first, the Board also met with the Board of the PGA WA/NT Division to discuss ways in which both bodies can work more cohesively to develop the game as a whole in WA.

Our Chief Executive Gary Thomas has continued to provide outstanding service and support to the Board and leadership to our staff which increased by two during 2012.

Finance

The audited financial reports for 2012 accompany this report and show a surplus of \$155,616 for the period. This is another pleasing result when compared to budget and places the organisation in a strong financial position for the future. As was the case in 2011, much of the surplus has resulted from unexpected increases in income and controlled expenditure on budgeted items for which our staff are to be complimented. Further detail and explanation on the financial result is provided in the report from the Chief Executive.

Marketing

Noticeable progress was made in our marketing activities during 2012. Clubs will already be aware of the commercial relationship that has been established with Officeworks. This relationship will generate savings on a wide range of in-house consumables and general requirements. Similar arrangements are being pursued with a number of other suppliers to the golf industry.

The work done by the Marketing Committee during 2012 has been largely formative, but a solid foundation has been laid and we anticipate achievement of our strategic objectives in the years to come.

Premises

Our long term vision is to establish a permanent and durable home for the administration of the game in Western Australia. Parameters for this project have only been loosely identified at this stage but the Board has resolved to set aside net rental income from the lease of the Labouchere Road property to help achieve this objective.

The refurbishment of the Melville Parade premises last year has resulted in a far more comfortable and efficient facility for our staff and volunteer committees. Completion of this project now provides ample time for our Facilities Committee chaired by Frank Bryant to continue researching various options, including our current location, as they arise until the best outcome can be achieved for a long term home for GolfWA. It is envisaged that we will be based in our current facility for at least the next 3-5 years.

Golf Management Committee

We note with regret the retirement from our Golf Management Committee and several sub-committees of three long serving members of golf in Western Australia – Russell Walker from the GMC and David McFarnell and Marguerite Moors from GMC sub-committees. Approximately sixty years of collective service has been provided to the game over extensive careers by this group of hardworking, dedicated volunteers. We salute them and wish them every happiness in retirement.

Meanwhile, the work continues for Chairman Graeme Parsons and the returning and newly recruited members of our Golf Management Committee and its subcommittees for 2013 as listed below; the structure of which has undergone minor refinement.

Graeme Parsons
Di Monk
Graham Mustow
Alison Lang
Shonna Gobby

GMC Chair
Technical Services
Events & Tournaments
Game Development
High Performance

The Education & Services subcommittee has been removed from the function of the Golf Management Committee as it was felt this area is now a Board and staff responsibility. Appreciation is extended to Harold Simmons in his role as Chairman of this subcommittee over the past two years. Harold remains on the GMC and will assist in the area of Events and Tournaments.

Our member clubs are to be thanked for their annual nominations of suitably qualified and experienced personnel to form this committee that is so essential to the well-being of our programmes and events. Congratulations also to Clayton Bell as Golf Operations Manager and his staff for their support of these committees in another highly successful year.

Handicapping & Course Rating

The changes made by Golf Australia to the 'rolling average' handicap algorithm have been effective and resulted in a far more stable outcome at all levels. Work on a number of elements of the revised

handicapping system is ongoing and will result in an Australian Handicap System that is similar in principle to the USGA system, but unique in that it caters for the competitive environment of Australian golf rather than the more social environment of other jurisdictions.

Uncompleted elements being finalised include daily ratings, nine hole and conforming social scores, four ball events, Stableford Handicap Adjustment and Slope. At this stage Golf Australia expects the system to be fully operational later this year.

Meanwhile, all courses in Western Australia have now been rated to USGA standards. This has been a massive but enjoyable exercise, and I thank Di Monk and her team, as well as the many club representatives we met along the way, for ensuring the programme was conducted as smoothly as possible.

The Game

Our 'MYGolf' development programmes continued and grew steadily during 2012 to ensure that all strategic objectives were achieved, with a highlight being the introduction of the Smarter than Smoking MYGolf Tour. Golf is now being actively promoted at primary school level alongside the programmes of other major sporting codes such as 'Auskick', 'in2Cricket', 'Minkey' and the 'Nippers' programmes run by surf lifesaving.

Unfortunately our Game Development Manager Fiza Errington resigned during the year to take a position with the Australian Ladies' PGA Tour in Queensland. We are most appreciative of the excellent work done by Fiza during her time at Golf Western Australia and wish her well in the future. Since Fiza's departure the game development team has been led by Matt Espie.

At a High Performance level, WA achieved considerable success with the WA State Women's team winning the Interstate Series for the second consecutive year; Min Jee Lee winning the US Junior Girls Amateur Championship and as a result the Railtrain WA Junior Sports Star of the Year; Oliver Goss winning the WA Open, WA Amateur Championship and making the quarter finals of the US Amateur and the emergence of Brady Watt, Hannah Green and Hayley Bettencourt with wins in National ranking events.

Further information regarding Game Development, High Performance and Tournaments follows in other areas of this report.

Western Australian Golf Foundation

I reported last year the Trust Deed of the Graham Marsh Junior Golf Foundation was to be amended to form the Western Australian Junior Golf Foundation. As work unfolded on this task it was agreed by all stakeholders the new Foundation should have a wider role than junior golf only; hence the formation of the Western Australian Golf Foundation.

The Foundation is governed by a Board of Trustees comprising two from GolfWA, two from the PGA and one individual who may be appointed by the other Trustees. GolfWA trustees are Ian Crockett and Ken Richards whilst the PGA trustees are Peter Hopkins and Cameron O'Hara. Ian Crockett has been appointed Chairman and there is not an appointed Trustee at this stage.

The charter of the Foundation is mainly fund raising and distribution of such funds to support programmes of game development for juniors and adults, men and women, disabled and minority groups. The 'Will You Chip In' programme that has already been launched in some clubs is the first of the fund raising programmes of the Foundation and it is hoped that many of our Affiliated clubs and their members will support this initiative in 2013. Further programmes will be developed and rolled out to benefit the future of our great game at all levels.

Young Members Panel

The Board has resolved to form a panel of younger golf club members to gather input on programmes and services that will attract players of their age bracket to the game and to membership of a golf club. Gemma Felton has been appointed Chair of the Panel which will meet for the first time in February 2013.

Membership of the Panel is made up of current golf club members nominated by their clubs as being suitably qualified and capable of making a contribution to Panel outcomes. The Panel has commenced its work with twelve nominated members and will adapt in size as things progress. We look forward to the work of the Young Members Panel and its potential to benefit the game and our member clubs.

Western Australian Open

The John Hughes Geely Nexus Risk Services WA Open was hosted by Royal Perth Golf Club in 2012 and was a huge success. Everything that is positive about the game of golf was on display, including a beautifully presented golf course, a quality field, commercial support from a loyal group of sponsors, volunteers, superb catering and clubhouse hospitality, and a finish that promoters of major events would wish for every tournament.

Particular appreciation is extended to Greg Norrish as Chairman of the WA Open Committee and his enthusiastic group of committee members for another job very well done. Congratulations also to the two amateur players who finished two shots clear of the professional field then staged a wonderful five hole playoff, each birdying three of the first four play-off holes. The eventual winner was Oliver Goss, but we must also pay tribute to the performance of Brady Watt who coincidentally finished runner-up to Oliver in the WA Amateur Championship played earlier in the year at Mt Lawley Golf Club.

The quality of the 2012 WA Open was boosted by the WA PGA Championship and the inaugural Perth International that were held during the two weeks prior. This enabled a number of touring professional players to make the trip to Perth for the three events, including most of the Western Australian professionals playing on various tours around the world.

The WA Open will be hosted by Mt Lawley Golf Club in 2013, again forming part of a 3 week circuit of golf with the WA PGA Championship and Perth International.

Vale

We note with sadness the passing of Maxine Bishop in November. Maxine was one of Western Australia's most recognised and highly decorated amateur players during her lifetime of membership at Royal Perth Golf Club. In a career that included being the first WA golfer to win the Australian Amateur (1951), and winning the Western Australian Amateur Championship on 11 occasions, she also

represented her country at a time when teams had to travel by ship to compete internationally and were away from home for tours lasting several months at a time.

Maxine and her contribution to the amateur game were formally recognised at the 2010 Golf Industry Dinner that was attended by over five hundred people.

Volunteers & Staff

I conclude this report with a vote of appreciation for my colleagues on the Board of GolfWA, all members of the Golf Management Committee and subcommittees, and every member of staff, for their ongoing dedication and professionalism that resulted in a solid year of outcomes and results for Western Australian golf during 2012. We trust their involvement has again been satisfying and that you look forward to working with GolfWA for many years to come.

The 2013 season is now underway and already we see Western Australian players achieving success. Brady Watt was the medallist in the Australian Men's Amateur Championship and Min Jee Lee won the Australian Women's title. Let's hope that these two performances are the catalyst for a successful year for WA golfers.

A handwritten signature in black ink, appearing to read "IM (Max) Hannah", is written over a light blue horizontal line.

IM (Max) Hannah
Chairman

Golf Management Committee Report

The GolfWA Golf Management Committee (GMC) met 11 times during 2012. The committee members, elected at the end of 2011, were Graeme Parsons (Chair), Russell Walker, Graeme Mustow, Harold Simmons, Di Monk and Alison Lang with Dianne Tomlin and Max Hannah from the Golf WA Board.

The areas of responsibility for the GMC includes Technical (Rules, Handicapping and Course Rating), High Performance, Events & Tournaments, Education & Services and Game Development. Each member of the GMC was appointed to chair one of these subcommittees and members were drawn from club members that had expressed an interest in a particular area.

The Technical Subcommittee chaired by Di Monk, while keeping abreast of the imminent changes to the handicapping system being introduced by Golf Australia, completed the outstanding courses from the 2010/11 course rating programme. To cater for the requirement of the rating system for every course to be re-rated at least every ten years a roster has now been established. This process will be ongoing and is mainly dependent upon volunteers. It also involves course raters from all States cross referencing each other's work from time to time to ensure uniformity around the country.

Pleasingly, three well-attended Club Level Rules Accreditation Courses were also conducted in 2012 along with a State Level Accreditation Course, the first one ever held in WA.

The High Performance Subcommittee chaired by Russell Walker continued their work with the State and National Coaches and Golf Australia to improve the programmes offered to our elite players. After a concerted review and subsequent changes to our systems over the past two years, we now believe we have a High Performance structure that will give WA players plenty of opportunity to develop their game.

From a results perspective, of particular note was the Women's team winning the Interstate Series held at the West Lakes Golf Club (SA) and defending the title they won in 2011. The Junior Girls' team finished runners up for the second consecutive year whilst the Men's and Junior Boys teams finished 5th and 6th respectively in their Series.

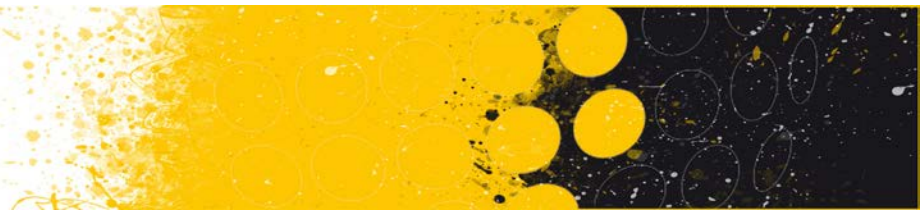
Whilst the Chairman has detailed numerous individual achievements in his report it is worthy to note that WA finished the year with 4 players (2 men and 2 women) ranked in the top 20 of the R&A World Amateur Rankings.

The Events and Tournaments Subcommittee chaired by Graeme Mustow continued their work of ensuring that all events and tournaments conducted by Golf WA best use the resources available and strive to improve the participation in these events. For the first time the Men's and Women's Amateur qualifying and match play were played at the same time and venue; feedback from players and spectators would indicate this was a great success. In 2013 the State Men's and Women's Senior Championship will also be held at the same venue at the same time. The various pennant competitions continue to grow in popularity and some minor changes will continue to improve these competitions further. The push to increase the number of girls playing pennants resulted in almost 60 girls forming two divisions, a considerable increase on 2011. Of particular note are the 4 clubs who have been successful in fielding a full junior girls' team.



The following is a list of major tournaments conducted by GolfWA throughout 2012 showing the results of each event. All of these tournaments are hosted by our Affiliated Clubs and we are greatly appreciative of their continued support in hosting such events.

Tournament	Venue	Winners	Runners Up
WA Open	Royal Perth GC	Oliver Goss	Brady Watt
WA Women's Amateur	Mount Lawley GC	Breanna Elliott (Vic)	Grace Lennon (Vic)
WA Women's Amateur Medal	Mount Lawley GC	Grace Lennon (Vic)	Breanna Elliott (Vic)
WA Men's Amateur	Mount Lawley GC	Oliver Goss	Brady Watt
WA Men's Amateur Medal	Mount Lawley GC	Oliver Goss	Brady Watt
WA Women's 72 Hole Strokeplay	Lake Karrinyup CC	72: Breanna Elliott (Vic) 54: Kate Goddard	72: Whitney Hillier 54: Peta Roberts
Ivie Temperley Consistency (Stroke Averages)	Various	Min Jee Lee	Whitney Hillier
Paxton Averages	Various	Michael Dennis	Ryan Peake
WA Junior Girl's Amateur	Wanneroo GC	Amy Walsh (Qld)	Hannah Green
WA Junior Boy's Amateur	Wanneroo GC	Curtis Luck	Jarryd Felton
WA Women's Veteran's Amateur	Mandurah CC	Ros Fisher	Rosemary Boyd
WA Men's Senior Amateur	Cottesloe GC	Stefan Albinski (NSW)	Graham Bowen
WA Women's Amateur Foursomes	Lake Karrinyup CC	Juliy & Rachita Vasandani	Chloe Beckwith & Hayley Bettencourt
WA Men's Open Foursomes	Lake Karrinyup CC	Lincoln Reemeyer & Stephen Dartnall	Ray Chow & Daniel Hoeve
WA Men's Amateur Foursomes	Lake Karrinyup CC	Ray Chow & Daniel Hoeve	Adam Davey & David Lawler
Women's Regional Seniors	Albany GC	Shirley Culloty	Di Reside
Women's Provincial Tournament	Hyden GC	Mardi Dungey	Yvonne Heinrich
WA State Sand Greens	Boyup Brook	Brady Watt	Michael Dennis
Men's Country Foursomes	Wanneroo GC	Michael Stirk & Evan Sewell	Gavin Reynolds & Craig Reynolds
Men's Country Champion	The Vines	Stephen Lord	Danny Ennor
Women's Country Week Bronze	Mount Lawley GC	Petrina King	Lucy Widdup
Women's Country Week Silver	Mount Lawley GC / Western Australian GC	Sharon Koch	Sue Bloxam
Women's Division 1 Pennant	Various	Lake Karrinyup CC	Royal Perth GC / Western Australian GC



Women's Division 2 Pennant	Various	Melville Glades GC	Wanneroo GC
Women's Division 3 Pennant	Various	Joondalup CC	Gosnells GC / Nedlands GC
Men's Division 1 Pennant	Various	Gosnells GC	Cottesloe GC
Men's Division 2 Pennant	Various	Hartfield CC	Wanneroo GC
Men's Division 3 Pennant	Various	Melville Glades GC	Sea View GC
Men's Senior Individual Pennant Div 1	Various	Joondalup CC	Lake Karrinyup CC
Men's Senior Individual Pennant Div 2	Various	Western Australian GC	Royal Perth GC
Hastings Reid Cup	Western Australian GC	Gosnells GC	Mandurah CC

The Game Development Subcommittee chaired by Alison Lang and staff lead by Matthew Espie, continued to build on the MYGolf in Schools programme delivering courses to 92 schools; secured 20 MYGolf Ambassadors who will continue teaching golf in their schools and reached its goal of establishing over 30 MYGolf Centres and signed up over 400 MYGolf Centre participants. 2012 also saw the introduction of the Smarter than Smoking MYGolf Tour which was extremely well supported by member clubs. In total, 14 Smarter than Smoking MYGolf Tour events were held providing over 150 boys and girls the opportunity to play a modified game of golf. More work continued with clinics to introduce women to the game and this area will receive further support in 2013.

Education and Services Subcommittee, Chairperson Harold Simmons, and the GolfWA staff worked hard on improving the communication processes between the clubs and GolfWA. To this end an information booklet was developed and distributed to all clubs providing some of the information that was available in the year books produced by WGWA and WAGA. Improvements to the website and e-news along with the newly launched GolfWA e-zine have made a lot of the information required by clubs and their member's easily accessible and further work is planned for 2013 with assistance from DSR. Delegates Meetings/Forums were also held in Geraldton and Kellerberrin and these were well received.

2012 saw the retirement of a long serving member of the GMC and WAGA in Russell Walker. Russell has, over 20 years, given freely of his time to support golf at all levels in WA and the GMC wishes him good golfing in his second retirement. In 2013 we welcome Shonna Gobby to the GMC and look forward to another successful year.



Graeme Parsons
Chairperson

Chief Executive Report

As advised in last year's Annual Report, the development and implementation of a Strategic Plan was a crucial element in the first full year of GolfWA and 2012 has seen a continuing drive to action the key strategies in order to achieve our major goals.

Finance

In reference to the Audited Financial Reports for 2012, it can be seen that GolfWA had another sound financial year with an operating surplus of \$155,616. This surplus is pre the distribution of funds to the Reserve that was established during 2012 reflecting income received from the rental of the premises on Labouchere Road. After distribution, the current year earnings are \$136,573.

In relation to the financial statements and accompanying notes for 2012, following are the major factors to be noted:-

Balance Sheet

The net asset position of the business increased equal to the above surplus of \$155,616, with the most significant asset changes being an increase in the cash position (Note 2), a reduction in Prepayments and Deposits (Note 3) and the increase in the value of the GolfWA Offices (Note 4) which were refurbished at the beginning of 2012. In terms of Liabilities, Trade Creditors decreased by just over \$43,000 whilst Income Received in Advance has increased compared to end of year for 2011 (Note 6); primarily due to grants from the DSR.

The Balance Sheet also now includes the Labouchere Road Reserve Fund (Note 7). The Board resolved that rental income from the Labouchere Road premises should not be used to help offset the day to day operations of the business but rather set aside for any possible future relocation of the offices of GolfWA. The costs of refurbishing these offices had been recovered by March 2012 and thus the Reserve reflects net rental income received from April 2012 onwards.

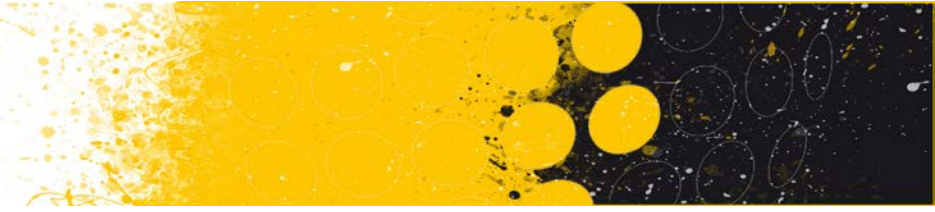
Income

Affiliation Fee Income in 2012 of \$716,838 was \$13,600 above budget, primarily due to an increase in the number of Public Course affiliated members.

Event Income (Note 10) increased by nearly \$30K in 2012 however this has been largely offset by an increase in Competition Expenses of nearly \$19K (Note 13).

Funding and Grants (Note 11) showed a slight increase despite a decrease in the amount shown as Golf Australia Funding. As reported in last year's Annual Report, the GA Funding for 2011 also included funding for 2010 due to the delay in signing the Memorandum of Understanding. However, we were able to secure a grant from DSR of \$30K to assist in meeting the costs of the office refurbishment and this combined with an increase in funding from Healthway resulted in grant income exceeding budget.

Sponsorship (Note 12) decreased in 2012 mainly due to a reduction in the amount received from Srixon. As reported last year, the sponsorship arrangement that Srixon had through Golf Australia for each state concluded at the end of 2011; an arrangement that provided significant funding and appeared to be lost



in total. However we were delighted that Srixon saw fit to continue an individual relationship with GolfWA that provided invaluable funding.

The other significant Income variation is that of Rent Receivable with the accounts reflecting a full 12 months of income from Labouchere Road. The oncharge of outgoings is matched by Rates and Taxes for Labouchere Road (Note 18) with the net rental from April onwards transferred to the Labouchere Road Reserve Fund.

Expenditure

Travel, Accommodation, Meals and Allowances (Note 14) was below last year’s expenditure due to a reduction in Course Rating costs. With all courses having been rated by the end of 2011, the required process of re-rating courses will occur over a lengthier time and thus in 2012 the courses rated were primarily in the metropolitan area.

In the golfing department, Game Development costs were significantly less than 2011 due to very little cost incurred in MYGolf equipment as the kits this year were donated by Drummond Golf across the country whilst there was an increase in costs for High Performance. As stated in the 2011 report, this increase was budgeted for as the HP Programme operated from the beginning of the year, as opposed to the later start in 2011 due to amalgamation processes.

Employment expenditure for 2012 increased over 2011 due to the addition of 2 staff to the total compliment.

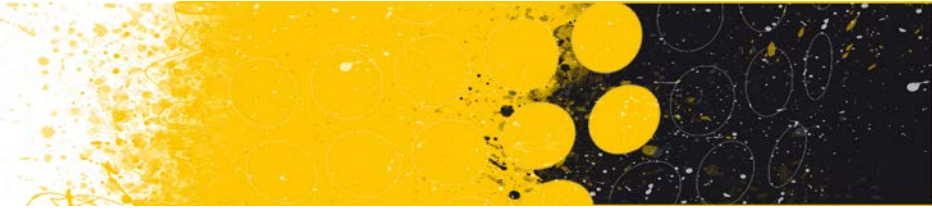
Sponsorship

It is appropriate and important that the support we receive from our sponsors is acknowledged, particularly the significant contribution from the Department of Sport and Recreation, not only financially but also through programme and information support; Healthway Smarter than Smoking whose support enables us to deliver many of our junior programmes and long-time corporate sponsors Bowra & O’Dea, Drummond Golf, Srixon, Newman & Brooks, Golf Box and George Booth Travel Tree. As has been mentioned by the Chairman, the WA Open was again a great success, much of which is due to the continued support of our two naming rights sponsors John Hughes Geely and Nexus Risk Services, as well as a strong group of Supporting Sponsors. Thank you to all for your support in 2012.

Membership

Below is a table showing the number of Members of clubs affiliated with GolfWA in 2012 with a comparison to 2011 as well as a second table showing the number of Affiliated Clubs.

	2012			2011		
	MEN	WOMEN	TOTAL	MEN	WOMEN	TOTAL
METROPOLITAN CLUBS	13192	3135	16327	13163	3136	16299
SUBURBAN CLUBS	157	19	176	217	22	239
COUNTRY CLUBS	8853	2913	11766	8714	2921	11635
PUBLIC COURSE CLUBS	2196	944	3140	1566	933	2499
TOTAL	24398	7011	31409	23660	7012	30672



	2012	2011
METROPOLITAN CLUBS	24	24
SUBURBAN CLUBS	1	2
COUNTRY CLUBS	170	172
PUBLIC COURSE CLUBS	69	53
TOTAL	<u>264</u>	<u>251</u>

These numbers represent a total increase of 737 individual members from 2011 which is primarily a result of new public course clubs affiliating with GolfWA. With the increase in public clubs removed, there was still a minor increase in total membership of 96. Whilst this number is not significant in percentage terms, it is a reversal of the declining trend in club membership that has been evident in preceding years both in WA and across Australia.

One of the major purposes of GolfWA is to increase participation, which will continue to be a focus in 2013, and together with new initiatives being explored and implemented by clubs, ultimately an increase in membership numbers. It is hoped that the trend evidenced in 2012 will continue in the years ahead.

Communication

Another area of great importance for GolfWA is to expand the range of services and communications offered to affiliated clubs and district associations. Feedback received from our annual survey indicated that this area had improved on 2011, particularly in electronic communication methods as covered in the Golf Management Committee report and we were able to enter into a partnership with Officeworks which will provide financial savings to club. A range of policy documents were also prepared by GolfWA in 2012, many of which can be adapted by clubs for their own needs, in particular the Member Protection Policy. Although small in number, successful programmes at clubs were listed on our website and other electronic forms and some clubs have now taken on those programmes at their own club with success. I do encourage clubs to share their successful ideas on membership and events so that other clubs may also benefit.

In conclusion, I wish to thank the Board and Golf Management Committee for their expertise and leadership in 2012, those volunteers who assist in many ways during the year and also the continued support of our Member Clubs, particularly for their willingness to provide their facilities for the range of events conducted by GolfWA.

Finally I express my gratitude to the staff of GolfWA for their untiring contribution to the sport in 2012.



Gary Thomas
Chief Executive

GOLF WESTERN AUSTRALIA (INC)

STATEMENT BY DIRECTORS OF THE BOARD

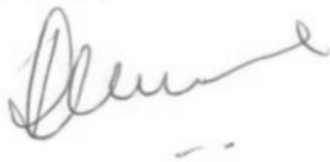
The Board has determined that the Club is not a reporting entity.

The Board has determined that this special purpose financial report should be prepared in accordance with the accounting policies outlined in Note 1 to the financial statements.

In the opinion of the Board the financial report as set out on pages 19-23:

1. Presents fairly the financial position of Golf Western Australia (Inc) as at December 31, 2012 and its performance for the year on that date.
2. At the date of this statement, there are reasonable grounds to believe that Golf Western Australia (Inc) will be able to pay its debts as and when they fall due.

This statement is made in accordance with a resolution of the Board and is signed for and on behalf of the Board by:-

A handwritten signature in black ink, appearing to read "I M Hannah".

I M (Max) Hannah
Chairman

A handwritten signature in black ink, appearing to read "Gary Thomas".

Gary Thomas
Chief Executive

Dated at South Perth this 6th day of February, 2013

GOLF WESTERN AUSTRALIA (INC)

INDEPENDENT AUDIT REPORT TO MEMBERS

Report on the Financial Report

I have audited the accompanying financial report, being a special purpose financial report, of Golf Western Australia (Inc) which comprises the Balance Sheet, Statement of Income and Expenditure, Accompanying Notes to the Financial Statements and Statement by Directors of the Board for Golf Western Australia (Inc) for the year ended 31st December, 2012.

Board's Responsibility for the Financial Report

The Board is responsible for the preparation and true and fair presentation of the financial report and have determined that the accounting policies used and described in Note 1 to the financial statements which form part of the financial report are consistent with the financial reporting requirements of the Associations Incorporations Act WA 1987 and are appropriate to meet the needs of the Members.

The Board's responsibilities also include designing, implementing and maintaining internal control relevant to the preparation and fair presentation of the financial report that is free from material misstatement whether due to fraud or error, selecting and applying appropriate accounting policies; and making accounting estimates that are reasonable in the circumstances.

Auditor's Responsibility

My responsibility is to express an opinion on the financial report based on my audit. No opinion as to whether the accounting policies used, as described in Note 1, are appropriate to meet the needs of the Members. My audit was conducted in accordance with Australian Auditing Standards. These Auditing Standards require that I comply with relevant ethical requirements relating to audit engagements and plan and perform the audit to obtain reasonable assurance whether the financial report is free from material misstatement.

An audit involves performing procedures to obtain audit evidence about the amounts and disclosures in the financial report. The procedures selected depend on the auditor's judgment, including assessments of the risks of material misstatement of the financial report, whether due to fraud or error.

In making those risk assessments, the auditor considers internal control relevant to the entity's preparation and fair presentation of the financial report in order to design audit procedures that are appropriate in the circumstances, but not for the purpose of expressing an opinion on the effectiveness of the entity's internal control. An audit also includes evaluating the appropriateness of accounting policies used and the reasonableness of accounting estimates made by the Board, as well evaluating the overall presentation of the financial report.

The financial report has been prepared for distribution to members for the purpose of fulfilling the Board's financial reporting obligations under the Associations Incorporation Act 1987. I disclaim any

responsibility for any reliance on this report or on the financial report to which it relates to any other person other than the members, or for any other purpose other than for which it was prepared

I believe that the audit evidence that I have obtained is sufficient and appropriate to provide a basis for my opinion.

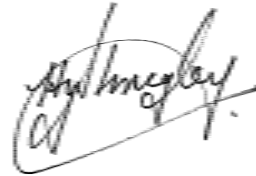
Independence

In conducting my audit, I have complied with the independence requirements of Australian professional ethical pronouncements.

Auditor's Opinion

In my opinion, the financial report of Golf Western Australia (Inc) presents fairly, in all material respects, the financial position of Golf Western Australia (Inc) as at 31st December, 2012 and of its financial performance for the year then ended in accordance with the accounting policies described in Note1 to the financial statements.

Dated at Murdoch this 6th day of February, 2013.

A handwritten signature in black ink that reads "Harold G Shrigley & Associates". The signature is written in a cursive, flowing style.A handwritten signature in black ink that reads "HG Shrigley". The signature is written in a cursive, flowing style.

Harold G Shrigley & Associates
40 Johanson Promenade
MURDOCH WA 6150

HG Shrigley FCA (Principal)

GOLF WESTERN AUSTRALIA (INC)

BALANCE SHEET AS AT DECEMBER 31, 2012

	NOTE	2012		2011	
		\$	\$	\$	\$
<u>ASSETS</u>					
<u>Current Assets</u>					
Cash Assets	2	678,217		547,636	
Receivables		19,019		33,019	
General Inventory		6,628		9,279	
Prepayments and Deposits	3	<u>204,585</u>	908,449	<u>252,256</u>	842,190
<u>Fixed Assets</u>					
Property, Plant & Equipment	4		1,648,355		1,534,641
<u>Total Assets</u>			<u>2,556,804</u>		<u>2,376,831</u>
<u>LIABILITIES</u>					
<u>Current Liabilities</u>					
Trade Creditors		12,104		55,508	
BAS Liabilities		4,821		(10,219)	
Payroll Liabilities	5	84,146		95,461	
Superannuation		15,619		13,536	
Income Received in Advance	6	310,367		237,551	
Accrued Expenses		<u>22,388</u>	449,445	<u>33,251</u>	425,088
<u>Total Liabilities</u>			<u>449,445</u>		<u>425,088</u>
NET ASSETS			<u>2,107,359</u>		<u>1,951,743</u>
<u>MEMBERS FUNDS</u>					
Retained Earnings		1,951,743		(39,851)	
Current Year Earnings	7	136,573		142,791	
Labouchere Road Reserve Fund	7	19,043		-	
Transfer from WAGA	8	-		1,121,902	
Transfer from WGWA	9	<u>-</u>		<u>726,901</u>	
TOTAL MEMBERS FUNDS			<u>2,107,359</u>		<u>1,951,743</u>

The accompanying notes form part of these financial statements

GOLF WESTERN AUSTRALIA (INC)

**STATEMENT OF INCOME AND EXPENDITURE
FOR THE YEAR ENDED DECEMBER 31, 2012**

	NOTE	2012 \$	2011 \$
<u>INCOME</u>			
Affiliation Fees		716,838	669,253
Golf Australia Affiliation Fees		343,865	201,018
Event Income	10	200,807	171,324
Funding & Grants	11	342,504	318,000
Sponsorship	12	50,352	55,965
WA Open		496	4,191
Interest Revenue		32,664	26,761
Rent Receivable & Outgoings		41,458	12,424
Sales (nett of Cost of Sales)		1,477	2,366
Sundry Income		19,248	27,690
		<hr/>	<hr/>
Total Income		1,749,709	1,488,992
 <u>EXPENDITURE</u>			
Golf Australia Affiliation Fee		342,658	237,855
Competition Expenses	13	114,160	95,229
Travel, Accommodation, Meals and Allowances	14	177,655	199,320
Game Development	15	48,071	73,397
High Performance	16	52,375	45,155
Accounting & Audit		4,550	7,091
Bank Fees & Charges		1,682	1,257
Computing		17,279	16,033
Electricity		4,725	4,739
Employment	17	697,276	565,813
Entertainment		3,316	3,018
Insurance		9,338	5,958
Office Maintenance, Cleaning & Storage		13,831	8,730
Promotion & Marketing		5,833	7,386
Rates, Taxes and Levies	18	24,739	21,949
Staff Amenities		1,539	1,711
Stationery, Printing & Postage		7,584	8,965
Sundry Administration Expenses		7,660	8,922
Sundry Operating Expenses		11,205	11,471
Telephone & Fax		10,024	9,696
Depreciation		38,593	12,506
		<hr/>	<hr/>
Total Expenditure		1,594,093	1,346,201
		<hr/>	<hr/>
<u>OPERATING SURPLUS/(DEFICIT)</u>	7	<u>155,616</u>	<u>142,791</u>

The accompanying notes form part of these financial statements

GOLF WESTERN AUSTRALIA (INC)

NOTES TO AND FORMING PART OF THE FINANCIAL STATEMENTS FOR THE YEAR ENDING DECEMBER 31, 2012

1 Statement of Significant Accounting Policies

This financial report is a special purpose financial report prepared in order to satisfy the financial reporting requirements of the Constitution, the Associations Incorporation Act (WA) and the needs of the Members. The Board has determined that Golf Western Australia (Inc) is not a reporting entity.

The financial report has been prepared in accordance with the requirements of the Associations Incorporation Act (WA), the Constitution and the following Australina Accounting Standards:-

AASB1031 Materiality
AASB110 Events Occurring after Reporting Date
AASB108 Accounting Policies, Changes in Accounting Estimates and Errors

No other Australian Accounting Standards, Urgent Issues Group Interpretations or other authoritative pronouncements of the Australian Accounting Standards Board have been applied.

The financial report has been prepared on an accruals basis and is based on historic costs and does not take into account changing money values, or except where specifically stated, current valuations of non-current assets

The following specific accounting policies, which are consistent with the previous period unless otherwise stated, have been adopted in the preparation of this financial report.

(a) Income Tax

Golf Western Australia (Inc) is an exempt body for income tax purposes and accordingly no provision for income tax is required.

(b) Fixed Assets

The depreciable amount of all fixed assets, except buildings, are depreciated over the useful lives of the assets of Golf Western Australia (Inc) commencing from the time the asset is held ready for uses. Equipment and consumable items are still depreciable at applicable rates.

(c) Employee Leave entitlements

A Provision for Long Service Leave is raised in respect of employees with seven or more year's service. Annual Leave is calculated at the legal liability of balance date.

(d) Inventory

Inventory has been valued at the lower of cost or net realisable value. Cost is based on the first in first out principle.

	2012		2011	
	\$	\$	\$	\$
2 Cash				
ANZ Classic Account		(408)		14,239
ANZ Savings Account		334,876		224,739
ANZ Term Deposit		324,443		308,636
Labouchere Road Capital Fund		19,043		-
Petty Cash		263		22
		<u>678,217</u>		<u>547,636</u>
3 Prepayments and Deposits				
Golf Australia Affiliation Fees		180,374		162,283
Improvements to Melville Parade offices		-		55,756
Competition Expenses		-		-
Travel & Accommodation High Performance		12,556		16,442
Game Development		-		1,800
Office Maintenance & Storage		776		2,204
Insurance		2,370		2,292
Promotion & Marketing		-		3,340
Rates and Taxes		4,934		6,391
Sundry Administration Expenses		3,575		1,748
		<u>204,585</u>		<u>252,256</u>

4	Property, Plant and Equipment					
	Building - Labouchere Road as valued	590,000		590,000		
	Improvements to Labouchere Road	11,090		11,090		
	Accum Depreciation on Improvements	- 3,142	597,948	- 924	600,166	
	Building - Melville Parade as valued	900,000		900,000		
	Improvements to GolfWA Offices	112,969		-		
	Accum Depreciation on Improvements	- 18,512	994,457	-	900,000	
	Computers and Equipment	81,651		61,276		
	Accum Depreciation - Computers & Equipment	- 55,594	26,057	- 40,891	20,385	
	Furniture & Fittings	91,947		72,983		
	Accum Depreciation - Furniture & Fittings	- 76,144	15,803	- 72,983	-	
	Perpetual Trophies		14,090		14,090	
				<u>1,648,355</u>		<u>1,534,641</u>
5	Payroll Liabilities					
	PAYG		10,683		32,159	
	Provision for Annual Leave		48,502		42,223	
	Provision for Long Service Leave		24,961	<u>84,146</u>	21,080	<u>95,461</u>
6	Income Received in Advance					
	DSR Funding		75,000		75,000	
	Other Grants		49,496		-	
	Entry Fees		437		247	
	GA Affiliation Fees		183,460		160,406	
	Outgoings received - Labouchere Road		1,974	<u>310,367</u>	1,898	<u>237,551</u>
7	Labouchere Road Reserve Fund					
	Net Surplus Year to Date		155,616		-	
	Transfer to Labouchere Road Reserve		- 19,043		-	
	Current Year Earnings			<u>136,573</u>		<u>-</u>
8	Transfer from WAGA (represented by)					
	Cash on Hand		-		211,598	
	Debtors		-		413	
	Inventories		-		4,850	
	Prepayments		-		41,904	
	Office Premises - Melville Parade		-		900,000	
	Office Equipment WDV		-		7,610	
	Furniture & Fittings WDV		-		254	
	Trophies		-		700	
					<u>1,167,329</u>	
	<u>Less Liabilities</u>					
	Creditors and Borrowings		-	<u>-</u>	45,427	<u>1,121,902</u>
9	Transfer from WGWA (represented by)					
	Cash		-		112,099	
	General Inventory		-		4,006	
	Office Premises - Labouchere Road		-		590,000	
	Computers & Equipment WDV		-		10,190	
	Perpetual Trophies		-		11,503	
					<u>727,798</u>	
	<u>Less Liabilities</u>					
	Salary Leave Provisions		-			
	Creditors and Borrowings		-	<u>-</u>	897	<u>726,901</u>
10	Event Income					
	Ladies Event Fees		105,805		103,965	
	Mens Event Fees		58,041		41,493	
	Junior Event Fees		28,733		12,239	
	Community Coaching Entry Fees		1,100		4,600	
	Gala Day Entry Fees		5,864		7,145	
	Seminar and Course Fees		1,264	<u>200,807</u>	1,882	<u>171,324</u>

11 Funding & Grants				
DSR Annual Funding	150,000		150,000	
Healthway Funding	130,000		120,000	
Golf Australia Funding	32,504		45,000	
Other Grants	30,000	<u>342,504</u>	<u>3,000</u>	<u>318,000</u>
12 Sponsorship				
Bowra & O'Dea	18,500		18,000	
Srixon	15,216		25,000	
Newman & Brooks	13,000		11,500	
Other	3,636	<u>50,352</u>	<u>1,465</u>	<u>55,965</u>
13 Competition Expenses				
Trophy Costs	64,125		58,001	
Food & Beverage	48,775		35,244	
Competition Sundry	1,260	<u>114,160</u>	<u>1,984</u>	<u>95,229</u>
14 Travel, Accommodation, Meals and Allowances				
High Performance	111,499		104,588	
Board and Staff	15,494		11,505	
Course Rating	2,169		46,626	
Game Development	22,983		13,474	
Other	25,510	<u>177,655</u>	<u>23,127</u>	<u>199,320</u>
15 Game Development				
Coaching	16,305		21,181	
MYGolf Equipment and Manuals	2,663		30,751	
Prizes and Promotion	20,925		13,315	
Venue Hire/F &B	8,178	<u>48,071</u>	<u>8,150</u>	<u>73,397</u>
16 High Performance				
Entry Fees	2,915		4,435	
Fitness	13,207		8,869	
Coaching	23,211		18,677	
Uniforms	13,042	<u>52,375</u>	<u>13,174</u>	<u>45,155</u>
17 Employment				
Wages and Salaries	633,799		512,448	
Long Service Leave	3,881		5,106	
Superannuation	56,443		46,030	
Recruitment	555		225	
Professional Development	2,598	<u>697,276</u>	<u>2,004</u>	<u>565,813</u>
18 Rates, Taxes and Levies				
Rates, Taxes and Levies - Melville Parade	11,624		9,014	
Rates, Taxes and Levies - Labouchere Road	10,688		11,739	
Property Management - Labouchere Road	2,427	<u>24,739</u>	<u>1,196</u>	<u>21,949</u>
19 Capital Commitment				
At balance date GolfWA Inc had a capital expenditure commitment for office renovations of the Melville Parade property		<u>-</u>		<u>76,220</u>



golf **wa**